

C4BPA Antibody (C-term)
Affinity Purified Rabbit Polyclonal Antibody (Pab)
Catalog # AP5968b**Specification**

C4BPA Antibody (C-term) - Product Information

Application	FC, WB, IHC-P,E
Primary Accession	P04003
Other Accession	NP_000706.1
Reactivity	Human
Host	Rabbit
Clonality	Polyclonal
Isotype	Rabbit IgG
Antigen Region	470-499

C4BPA Antibody (C-term) - Additional Information**Gene ID** 722**Other Names**

C4b-binding protein alpha chain, C4bp, Proline-rich protein, PRP, C4BPA, C4BP

Target/Specificity

This C4BPA antibody is generated from rabbits immunized with a KLH conjugated synthetic peptide between 470-499 amino acids from the C-terminal region of human C4BPA.

Dilution

FC~~1:10~50

WB~~1:1000

IHC-P~~1:50~100

E~~Use at an assay dependent concentration.

Format

Purified polyclonal antibody supplied in PBS with 0.09% (W/V) sodium azide. This antibody is purified through a protein A column, followed by peptide affinity purification.

Storage

Maintain refrigerated at 2-8°C for up to 2 weeks. For long term storage store at -20°C in small aliquots to prevent freeze-thaw cycles.

Precautions

C4BPA Antibody (C-term) is for research use only and not for use in diagnostic or therapeutic procedures.

C4BPA Antibody (C-term) - Protein Information**Name** C4BPA

Synonyms C4BP

Function Controls the classical pathway of complement activation. It binds as a cofactor to C3b/C4b inactivator (C3bINA), which then hydrolyzes the complement fragment C4b. It also accelerates the degradation of the C4bC2a complex (C3 convertase) by dissociating the complement fragment C2a. Alpha chain binds C4b. It also interacts with anticoagulant protein S and with serum amyloid P component.

Cellular Location

Secreted.

Tissue Location

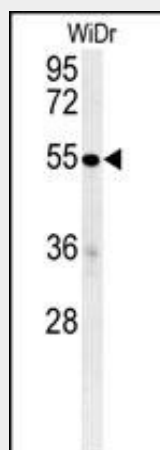
Chylomicrons in the plasma.

C4BPA Antibody (C-term) - Protocols

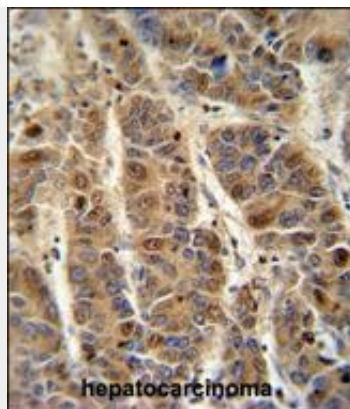
Provided below are standard protocols that you may find useful for product applications.

- [Western Blot](#)
- [Blocking Peptides](#)
- [Dot Blot](#)
- [Immunohistochemistry](#)
- [Immunofluorescence](#)
- [Immunoprecipitation](#)
- [Flow Cytometry](#)
- [Cell Culture](#)

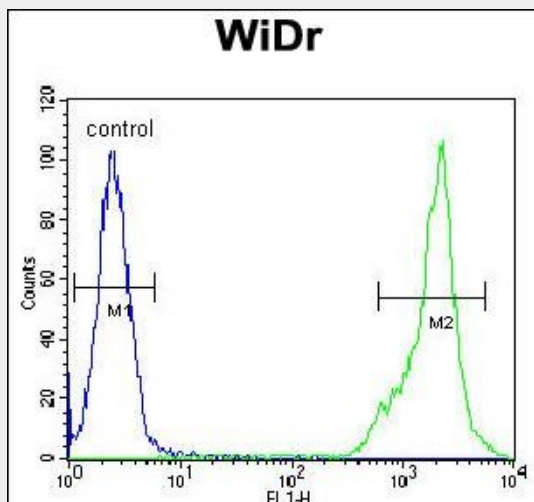
C4BPA Antibody (C-term) - Images



C4BPA Antibody (C-term) (Cat. #AP5968b) western blot analysis in WiDr cell line lysates (35ug/lane). This demonstrates the C4BPA antibody detected the C4BPA protein (arrow).



C4BPA antibody (C-term) (Cat. #AP5968b) immunohistochemistry analysis in formalin fixed and paraffin embedded human hepatocarcinoma followed by peroxidase conjugation of the secondary antibody and DAB staining. This data demonstrates the use of the C4BPA antibody (C-term) for immunohistochemistry. Clinical relevance has not been evaluated.



C4BPA Antibody (C-term) (Cat. #AP5968b) flow cytometric analysis of WiDr cells (right histogram) compared to a negative control cell (left histogram). FITC-conjugated goat-anti-rabbit secondary antibodies were used for the analysis.